

Wood Application

Nail plate trusses

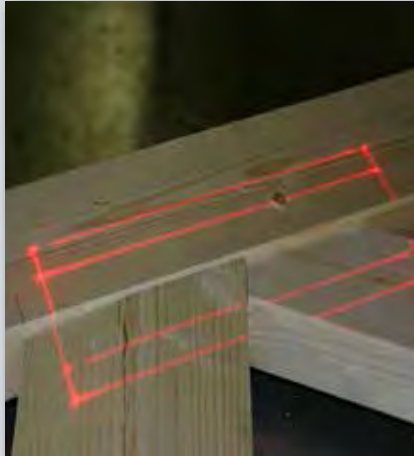
Z-LASER

Use of laser projectors

All the elements of a nail plate truss can be accurately projected with the help of a laser projection system. The contours of the finished supporting structure are projected onto the press, which makes the individual cut planks much easier to align. The position where the nail plates should be pressed in with the help of C or stamp presses, to connect the junctions of pressure bars and tie rods, can also be displayed with the laser projector.



Display of the nail plate position



Advantages

- Quick and exact placement of planks and nail plates
- Reduction of setup time
- Increase of work quality

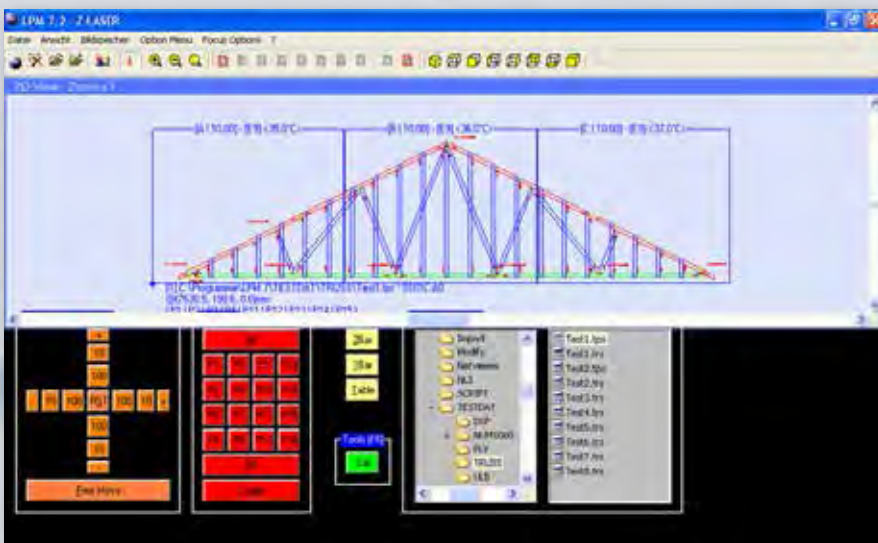
Recommendation

- LP-HFD red or green
- Cardanic mount
- Truss import filters

LPM laser projection software

The CAD data of nail trusses is generally split into several layers (levels): the contours of planks and the position of the nail plates for the upper and lower side. Each layer also corresponds with one work step.

With our LPM laser projection software, the individual levels can be loaded in sequence and projected using an optional remote control.



Multi-projection systems

To cover complete nail plate trusses with the laser, our customers generally work with multiple projectors connected via network. LPM also has optional import modules for truss standard formats such as Alpine, MiTek and others.

qtec
Automation & WaterJet Technology

Qtec ApS
Lundsberg Industrivej 17
DK-6200 Aabenraa
Phone +45 73 66 21 00
Fax +45 73 66 22 00

E-mail: info@qtec.dk
Http: www.qtec.dk

CVR-nr.: DK-28 85 49 43